

# NANO<sup>®</sup>CONNECT

## USER MANUAL

9.7" Mirror Monitor with Dual-Channel Dash Cam and Smart Display



---

Connecting your drive.

NC-962MIRDVR



## CONTENTS

<b>1.0</b>	<b>INTRODUCTION</b> .....	<b>6</b>
<b>2.0</b>	<b>FEATURES</b> .....	<b>8</b>
<b>3.0</b>	<b>PACKAGE CONTENTS</b> .....	<b>8</b>
<b>4.0</b>	<b>PRODUCT OVERVIEW</b> .....	<b>10</b>
<b>5.0</b>	<b>GETTING STARTED</b> .....	<b>11</b>
5.1	INSERTING/REMOVING A MICRO SD CARD .....	11
5.2	INSTALLING with RUBBER CLIPS .....	12
5.3	CONNECTING TO POWER SUPPLY .....	13
5.4	INSTALLING THE REAR CAMERA .....	14
5.5	REAR CAMERA WIRING DIAGRAM .....	16
5.6	POWERING ON/OFF .....	16
<b>6.0</b>	<b>PLAYING BACK RECORDED VIDEO ON A PC</b> .....	<b>17</b>
<b>7.0</b>	<b>TOUCH SCREEN</b> .....	<b>18</b>

<b>8.0</b>	<b>INITIAL SETTINGS</b> .....	<b>18</b>
8.1	FORMATTING AN SD CARD .....	18
8.2	DATE/TIME .....	19
<b>9.0</b>	<b>OPERATING INSTRUCTIONS</b> .....	<b>19</b>
9.1	RECORDING VIDEO .....	20
9.2	LOCKED RECORDING .....	21
<b>10.0</b>	<b>REAR CAMERA</b> .....	<b>22</b>
10.1	SCREEN OPERATION .....	23
10.2	SETTINGS MENU .....	25
10.3	RESOLUTION.....	25
<b>11.0</b>	<b>LOOP RECORDING</b> .....	<b>26</b>
<b>12.0</b>	<b>G-SENSOR</b> .....	<b>26</b>
<b>13.0</b>	<b>PARKING MONITOR</b> .....	<b>27</b>
13.1	TIME-LAPSE RECORDING MODE .....	28
13.2	DEFAULT VIEW .....	28

13.3	DATE/TIME .....	29
13.4	FORMATTING MICRO SD CARD .....	29
13.5	FACTORY RESET .....	30
13.6	ABOUT .....	30
<b>14.0</b>	<b>AUTO LCD OFF.....</b>	<b>30</b>
14.1	DATE/TIME STAMP.....	31
14.2	PROJECTION MODE.....	31
14.3	CARPLAY/ANDROID AUTO SET-UP.....	32
14.4	AUDIO OUTPUT SET UP.....	35
14.5	BLUETOOTH FUNCTION OVERVIEW.....	38
<b>15.0</b>	<b>WARRANTY TERMS AND CONDITIONS.....</b>	<b>40</b>
<b>16.0</b>	<b>NOTES.....</b>	<b>46</b>

## 1.0 INTRODUCTION

Thank you for purchasing the NanoConnect NC-962MIRDVR touch-screen mirror monitor. Our products, like most after-market enhanced safety devices, are designed to assist and aid the driver and not to replace the manual responsibilities of the person operating the vehicle. Please read through these instructions before attempting to install this product. For the latest manual updates, please see [www.nanocampus.com.au](http://www.nanocampus.com.au) or [www.nanocampus.co.nz](http://www.nanocampus.co.nz).

### CAUTIONS

- Ensure that you are using the NC-962MIRDVR within your country's road laws. Please make sure you are familiar with your local road legislation before use.
- Leaving your car exposed to sunlight for extended periods of time with restricted ventilation can possibly damage the unit.
- Please set the time and date before you use this device to record.
- The reverse camera view is only to be used as a reference. Please drive to actual conditions on the road.
- The Mirror DVR is only to be used for non-commercial purposes and within the limits permitted by relevant laws.
- Please avoid using the Mirror DVR in the vicinity of any device that emits radio frequency interference (such as microwave ovens).
- It is considered normal for the NC-962MIRDVR to get warm during use.

## **BATTERY WARNING**

- Always charge the Mirror DVR using the provided charger. Improper charging of the NC-962MIRDVR may damage the internal battery.
- Never dismantle the Mirror DVR.
- Do not dispose of the NC-962MIRDVR in fire.
- Please dispose the NC-962MIRDVR and its internal battery in accordance with local regulations.
- Do not attempt to replace or expose the internal battery.

## **DISCLAIMER**

The NanoConnect NC-962MIRDVR is designed as a driver assistance device. However, it does not remove the need to drive your vehicle with care and caution. The legal responsibilities and safe driving practices still remain with the driver at all times. You have purchased this product with the understanding that it is used as an aid only. We highly recommend that you have this product professionally installed to ensure that it will perform its functions properly.

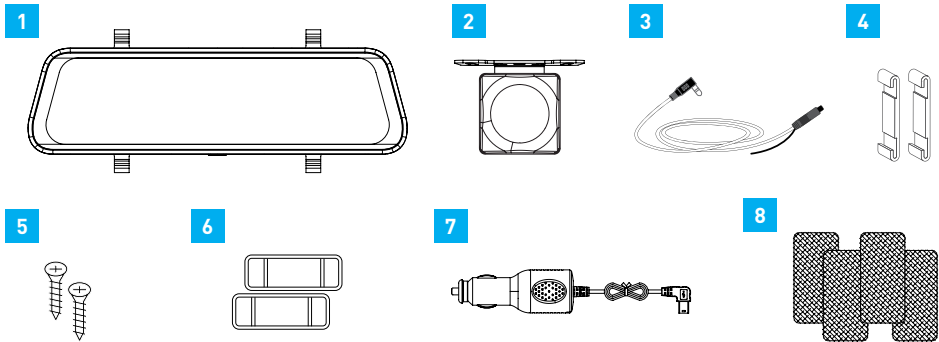
## **2.0 FEATURES**

- 2K front camera
- Full HD rear camera with reversing camera function
- 9.7" IPS touch screen
- Wireless Android Auto and CarPlay
- Supercapacitor
- 150° field-of-view front camera and 140° field-of-view rear camera
- Locked and saved recorded footage in the event of an incident
- Compatible for use with Micro SD cards Class 10 and above and up to 256GB
- Waterproof IP67-rated rear camera

## **3.0 PACKAGE CONTENTS**

- 150° field-of-view front camera and 140° field-of-view rear camera
- Locked and saved recorded footage in the event of an incident
- Compatible for use with Micro SD cards Class 10 and above and up to 256GB
- Waterproof IP67-rated rear camera





1. Mirror DVR

2. Rear Camera

3. 8m Rear Camera Cable

4. Rubber Fasteners

5. Screws

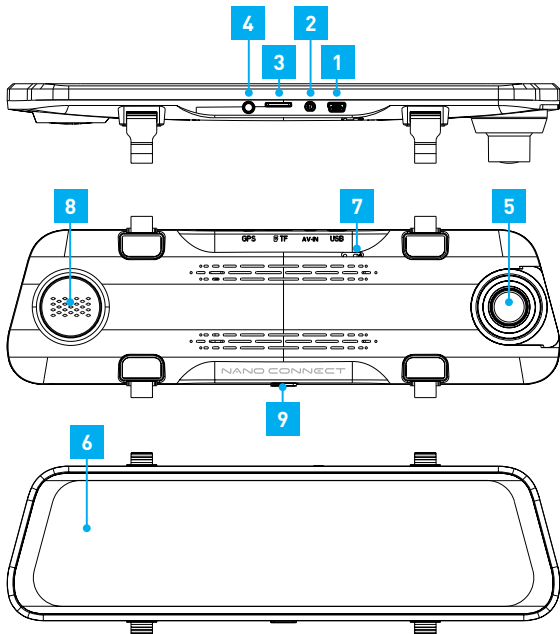
6. Fastener Clips

7. 12V Power Adaptor

8. 4mm EVA Pads

#### 4.0 PRODUCT OVERVIEW

1. Power Supply Port
2. AV IN for Rear Camera
3. Micro SD Card Slot (SD Card not included)
4. Auxiliary Port
5. Front Camera Lens
6. 9.7" 2.5D Touch Screen Panel
7. Reset Button
8. Speaker
9. On/Off Button
10. Microphone
11. Rear Camera



## 5.0 GETTING STARTED

### 5.1 INSERTING/REMOVING A MICRO SD CARD

With the Mirror DVR turned off and the screen facing towards you, insert the memory card with the text on the Micro SD card facing up into the Micro SD card slot. Push the memory card in until a click is heard.

To remove the memory card, ensure that the Mirror DVR is powered off, then push the memory card until a click is heard to release and eject the card.

#### **NOTE:**

- Do not remove or insert the memory card while the Mirror DVR is turned on as this may damage the memory card or corrupt the memory card's stored data.
- Please use a Class 10 or higher Micro SD card with a maximum capacity of up to 256GB.
- Please format the Micro SD card before initial use.
- When removing the memory card, be mindful that the memory card may eject quickly. Micro SD Card is not included.

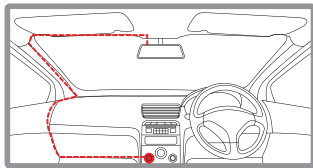
## 5.2 INSTALLING WITH RUBBER CLIPS

1. Remove the tape from the EVA pads. There are two sizing options for the EVA pads. Choose the size most suitable for use.
2. Two types of fasteners are supplied. Use the one that best suits the existing rear-view mirror. The longer fasteners are for bulkier rear-view mirrors.
3. Loop the rubber fasteners over the fastener clips.
4. Place the Mirror DVR in front of the existing rear-view mirror and ensure that the camera lens clears the outer edge of the existing rear-view mirror.
5. Loop the bottom rubber fasteners over the existing rear-view mirror and attach them to the bottom fastener clips.

### 5.3 CONNECTING TO POWER SUPPLY

Only use the included charger to power and charge the NC-962MIRDVR.

1. Once the Mirror DVR is securely installed onto the vehicle's rear-view mirror, plug the 12V DC power adaptor into the vehicle's 12V/24V accessory outlet.
2. Run the cable along the vehicle's console and windscreen and plug the USB input into the Mirror DVR port marked with the USB icon.

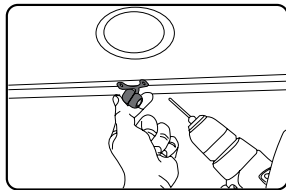


#### **NOTE:**

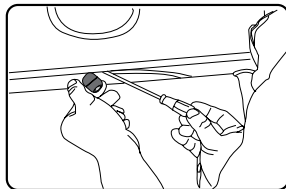
- Make sure that the camera's view is not obstructed by any window tint or objects.
- If your vehicle has side curtain airbags, please be very careful when running any cables along the vehicle's windows. Please ensure that you are not running cables past any of the airbags as this can prevent the airbags from deploying.

## 5.4 INSTALLING THE REAR CAMERA

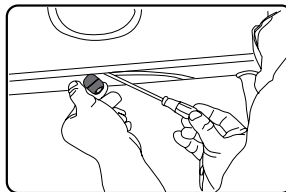
1. Select a flat and centred location near the licence plate lamp at the rear of the vehicle to mount the rear camera.
2. Attach some tape to the camera bracket to hold it in position and then drill two small holes. One hole is for the first screw and the other hole is to enable the rear camera cable to thread through.



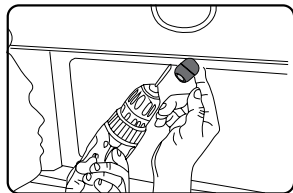
3. Fasten the first screw slightly to allow for some adjustment of rear camera.



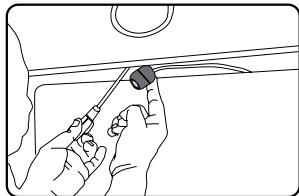
4. Insert the rear camera cable through the second hole and check the installation position.



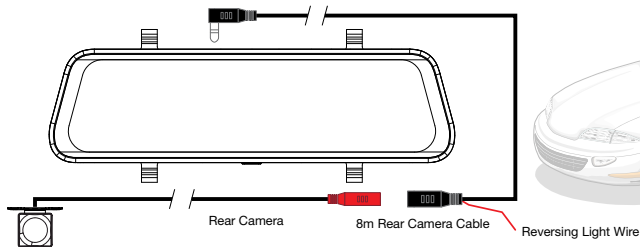
5. Mark the position suitable for the second screw and drill a small hole for it.



6. Fasten the second screw and securely tighten both screws.



## 5.5 REAR CAMERA WIRING DIAGRAM



## 5.6 POWERING ON/OFF

### AUTO POWER ON/OFF

When the NC-962MIRDVR is correctly installed and connected to your vehicle's 12/24V DC power supply, the Mirror DVR will automatically power on and start recording when the the car ignition is set to the ACC position. The Mirror DVR will automatically stop recording and shut down when your vehicle is powered off.




## **MANUAL POWER ON/OFF**

### **Manual Power On**

Press and hold the Power button at the bottom of the Mirror DVR until the NanoConnect start-up screen appears.

### **Manually Power Off**

If the Mirror DVR is currently recording, you can manually stop the recording by touching the  REC icon on the display. Then press and hold the Power button at the bottom of the unit. After powering off the device, please wait for 10 seconds before powering on the Mirror DVR again.

### **Resetting the Device**

If the Mirror DVR does not function normally, try restarting the Mirror DVR. To restart the Mirror DVR, locate a small button just below the USB port at the back of the Mirror DVR and press the button using an unfolded paper clip.

## **6.0 PLAYING BACK RECORDED VIDEO ON A PC**

To playback video files on your PC, it is recommended to insert the Micro SD card (not included) directly into your PC using either a USB Micro SD card reader (not included) or a Micro SD/SD Card adaptor (not included). Once the Micro SD card is inserted, it should appear as a removable storage device. It is recommended that you transfer video files for playback to a folder on your computer. This will reduce any delay in playback.

## 7.0 TOUCH SCREEN



The Mirror DVR uses a capacitive touch screen for easy and efficient operation.

## 8.0 INITIAL SETTINGS

Before using the NC-962MIRDVR, it is recommended you format a Micro SD card first and set the date and time.

### 8.1 FORMATTING AN SD CARD

Formatting the Micro SD card will delete all information on the card and prepare it for use with the Mirror DVR.




1. **Touch**  to enter the **Settings** menu.
2. Press the  **Format** button.
3. **Touch OK** to confirm.

#### **NOTE:**

- Menus cannot be accessed while the camera is recording. Please stop the recording before attempting to access the menu.
- Formatting your Micro SD Card will delete all files from the Micro SD Card. Once these files have been deleted, you will not be able to recover them.

## 8.2 DATE/TIME

Setting the Date and Time will enable the footage to be time stamped for easier referencing.

1. Touch the  to enter the Settings menu.
2. Touch the  Date/Time button.
3. Scroll up and down for Year, Month, Day and time and then press OK.
4. To save the date and time, touch the  button.

### NOTE:

- Once the date and time is set, it will be time stamped onto the footage.

## 9.0 OPERATING INSTRUCTIONS

### IMPORTANT NOTE

- The Mirror DVR will automatically turn on once it is connected to the power supply. The main menu screen will be displayed and the Mirror DVR will start recording.
- To exit the main menu and use the Mirror DVR as a conventional rear-view mirror, press the power button. The Mirror DVR will continue recording in the background.

## 9.1 RECORDING VIDEO



When the Mirror DVR is connected to your vehicle's 12/24V power supply, the Mirror DVR will automatically power up and begin recording when you start your vehicle. During start-up, the buttons will be unresponsive and the camera will take a moment to begin recording. The Mirror DVR will automatically stop recording and shutdown when your vehicle engine is turned off.

### **NOTE:**

- Depending on how some vehicles are wired, the Mirror DVR may continue recording when the vehicle engine is turned off. If this happens, please turn off the Mirror DVR manually or remove the power adaptor from the 12V/24V accessory outlet.
- The recording loop length can be configured to save a video file for every 1,3 or 5 minutes of recording. For information on how to adjust this setting, please refer to the Loop Recording section of this manual.
- The device saves the recorded footage and photographs onto the inserted Micro SD Card. If the memory card capacity is full, the oldest file in the memory card will be overwritten.
- The rear camera is designed to assist with recording and reversing. Reverse assistance will be displayed on the Mirror DVR screen immediately when reverse gear is engaged.

## 9.2 LOCKED RECORDING

Locked Recording saves the current video file and protects it from being overwritten. To manually start a Locked Recording, follow the instructions below.

1. During recording **touch** the  button.
2. To stop lock recording **touch** the  button again.

### NOTE:

- If the G-Sensor function is enabled and a collision is detected, the device will automatically trigger the Emergency Recording and lock the current video file.
- Please refer to the section titled G-Sensor for information on adjusting this setting.
- The Emergency Recording file is created as a new file, which will be protected to avoid being overwritten by normal loop recording. If the inserted Micro SD Card fills up with Emergency Recording files, the message 'SD Card Full' will appear on the screen, and the oldest emergency file will be automatically deleted when a new Emergency Recording file is created.

## 10.0 REAR CAMERA

The rear camera is designed to record and also assist with reversing by showing the rear view from the vehicle bumper and thus reducing blind spots. When installed correctly, the rear camera will activate when reverse gear is engaged, and the rear camera's feed will be displayed on screen.

When the vehicle's reverse gear is disengaged, the rear camera will still continue to record the rear camera view.

### **NOTE:**

- The rear camera is a visual aid to assist the driver to see what is behind the vehicle. It does not remove the responsibility of the driver to drive the vehicle properly.
- To ensure correct operation, it is highly recommended that the rear camera be professionally installed.






## 10.1 SCREEN OPERATION

Recording mode:






Tap screen for menu:



NUMBER	ICON	ITEM	DESCRIPTION
1.		Recording Indicator	Indicator will flash when the Mirror DVR is recording.
2.	04.25.34	Recording Duration Indicator	Shows the current recording duration.
3.		Parking Monitor Indicator	Parking Monitor will record any incident when the vehicle parked. When Time-Lapse mode is on and the vehicle engine is turned off, the recording will be done in Time-Lapse mode to save on memory space. (Requires Hard Wire Kit).
4.	15:45:25	Current Time	Shows the current time.
5.	DD.MM.YYYY	Current Date	Shows the current date.
6.	THU	Current Day	Shows the current day.
7.		Start/Stop recording	Touch this button to start/stop recording.
8.		Take Picture	Touch this button to take photos. The photos will be stored in a separate folder on the Micro SD card.
9.		Microphone On/Off	Touch this button to turn on/off the microphone. When the microphone is off, the recorded videos will be muted.



NUMBER	ICON	ITEM	DESCRIPTION
10.		Locked Recording	Touch this button to lock/unlock the current recorded video.
11.		Playback	Touch this button to access the recorded files folder, and to playback, lock or delete any recorded file.
12.		System Settings	Touch to enter into system settings.

## 10.2 SETTINGS MENU

Press the  **Settings** icon to enter the **Settings** menu.

## 10.3 RESOLUTION

When the Mirror DVR is powered on, recordings of both front and rear cameras will automatically start.




You can change the resolution of the front camera. However, the rear camera resolution cannot be changed.

You can change the resolution to 2K @ 30fps / FHD @ 30fps for the front camera. The rear camera resolution is fixed at FHD @ 30fps.

**Default Setting:** 2K @ 30fps.

## 11.0 LOOP RECORDING

Loop recording allows you to set the duration of a recording. To set the clip length, please follow the instructions below:

1. Press the  **Settings** icon to enter **Settings** menu.
2. **Touch**  **Loop Recording**
3. Choose 1, 3 or 5 minutes. The number inside the icon will change to 1, 3 or 5.
4. To save your selection, touch the  button.



**Default Setting:** 3 min.

### NOTE:

- To avoid taking up excessive memory space on the Micro SD card, it is advisable to use the 1 or 3 minutes option.

## 12.0 G-SENSOR

The built-in G-Sensor monitors your vehicle for impacts and will automatically protect the current recording in the event of a collision. You can turn off or adjust the sensitivity of the built-in G-Sensor with the following steps:

1. Press the  **Settings** icon to enter **Settings** menu.
2. The  **G-Sensor** icon will change between Off, Low, Medium and High. The lines on the icon will change to show the sensitivity of the G-Sensor.

3. To save your selection, touch the  button.




**Default Setting:** Low.

**NOTE:**

- This does not affect the Parking Monitor sensitivity.

### 13.0 PARKING MONITOR

When Parking Monitor mode is turned on and the car detects that the engine is off, the recording will be done in Time-Lapse mode. This is to save memory space when the car is parked. To activate Parking Monitor, please follow the instructions below:

1. Enter the Settings menu by pressing .
2. **Touch** the < and > buttons to navigate the **Settings** menu and **touch** the  **Parking Monitor** button.
3. **Touch** On or Off to make selection.
4. To save your selection, **touch** the .




**Default Setting:** Off.

**NOTE:**

- The Parking Monitor function requires a 3-wire Hardwire Kit installation.
- The Parking Monitor setting will only appear when the Mirror DVR is connected with 3-wire hardwire kit.

### 13.1 TIME-LAPSE RECORDING MODE




The duration of the Time-Lapse recording can be set when the vehicle is parked. The recording will stop after the set time has lapsed. If it is set to Off, the Time-Lapse recording will continue until the vehicle engine is turned on.

1. Enter Settings menu by pressing .
2. **Touch** the  **Time-Lapse Parking Mode** button sequentially to select OFF/2H/8H/12H/24H.
3. To save your selection, **touch** the  button.

**Default Setting: 1 hour.**

### 13.2 DEFAULT VIEW




You can select which camera should be the default camera for viewing and display on the Mirror DVR after powering on.

1. Enter the Settings menu by pressing .
2. Touch the  Default View button.
3. Touch to make your selection.
4. To save your selection, touch the  button.

**Default Setting: Rear Camera display.**


### 13.3 DATE/TIME

Setting the date and time will enable you to time stamp the footage for easy reference.

1. **Touch** the  to enter the Settings menu.
2. **Touch** the  **Date/Time** button.
3. **Scroll** up and down for **Year, Month, Day** and time and then press **OK**.
4. To save the date and time, **touch** the .

### 13.4 FORMATTING MICRO SD CARD

Formatting the Micro SD card will delete all information on the inserted Micro SD Card and prepare the card for use with the Mirror DVR.



1. **Touch** the  to enter the **Settings** menu.
2. **Touch** the **Format SD Card**.
3. Touch **OK**.

#### **NOTE:**

- Formatting your Micro SD Card will delete all files from the Micro SD Card. Once these files have been deleted you will not be able to recover them.




### 13.5 FACTORY RESET

Resetting will delete all your settings and go back to default factory settings.

1. Touch the  to enter the **Settings** menu.
2. **Touch** the  **Factory Reset** button.
3. Touch **OK** to confirm reset.



### 13.6 ABOUT

The firmware and Bluetooth versions will be shown on the firmware of the Mirror DVR.

1. **Touch** the  to enter the **Settings** menu.
2. **Touch** the  **About** button.
3. The firmware and Bluetooth versions will be shown on the firmware of the Mirror DVR.
4. **Touch**  button to go back to main menu.

### 14.0 AUTO LCD OFF

You can set the display screen to switch off automatically. Please note that the Mirror DVR will still continue to record.

1. Enter **Settings** menu by pressing .
2. **Touch** the  **Auto Display Off** button.
3. Touch sequentially to select Off, 5 Seconds or 10 Seconds.

4. To save your selection, touch the  button.



**Default Setting: Off.**

**NOTE:**

- We suggest keeping the setting at 10 seconds to ensure unrestricted rear camera views while driving. You can soft press the power key to switch off the display and the Mirror DVR will continue to record.


#### 14.1 DATE/TIME STAMP

To stamp the Date/Time onto the recorded footage, please follow the steps below:

1. Enter **Settings** menu by pressing .
2. **Touch**  **Date/Time** to turn on or off the stamp setting.

#### 14.2 PROJECTION MODE

To display the preferred screen with Car Play/Android Auto, please follow the steps below:

1. Touch the **Settings** icon.
2. **Touch** the  **Projection Mode** icon.
3. **Scroll** up and down to select the display.

**FULL-SCREEN DISPLAY:**

The entire screen will display Android Auto/CarPlay.

**HALF-SCREEN DISPLAY:**

Half of the screen will show Android Auto/CarPlay. The other half-screen can be set to show a front camera view, rear camera view or a blank screen.

**14.3 CARPLAY/ANDROID AUTO SET-UP**

When using CarPlay or Android Auto with the NC-962MIRDVR, the device is dependent on data from your smartphone for operation.

Connect your iPhone or Android smartphone to the NC-962MIRDVR using the following instructions. For Android smartphones, please download the Android Auto app from the Google Play Store before set-up.

1. Power up the NC-962MIRDVR.
2. Use Bluetooth to pair your smartphone with the device. The device default name is NC-962\_XXXX (where XXXX is a unique code).
3. After pairing, select CarPlay or Android Auto on the NC-962MIRDVR when prompted.
4. The NC-962MIRDVR will now automatically connect to your smartphone via Wi-Fi.




**NOTES:**

Bluetooth pairing is required only once at set-up for initial connection. Subsequently, the NC-962MIRDVR will automatically connect via Wi-Fi.

- First-time connection will take slightly longer.
- Only compatible with iOS 13.0 or Android 11.0 and their respective higher versions.

**NOTE:**

- Press  to read detailed instructions before connection.

After successful connection, the NC-962MIRDVR will automatically show the Android Auto or CarPlay screen.



Press  to select the option under display mode.

- Full Phone Display
- Partial Phone Display

When set to Partial Phone Display, the right side image can be changed to front camera view, rear camera view or to a blank screen by swiping left or right.

**NOTE:**

- Changing the projection mode will restart the Mirror DVR.

## 14.4 AUDIO OUTPUT SET UP

Press  to go to main Settings menu

### NC-962MIRDVR SPEAKER:

Select **NC-962** to play audio through the device's built-in speaker.



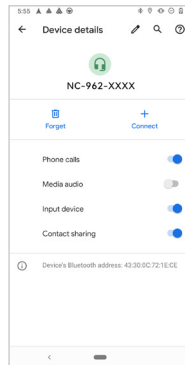
### CAR AUDIO:

Select **Car Audio** to play audio either through your smartphone speaker, or the car stereo speakers' if your smartphone is connected to car stereo system via Bluetooth. This only needs to be done once to maintain the same selection.



## NOTE:

Under Android Auto mode, it's suggested you disable 'Media Audio' in your smartphone's Bluetooth settings for the NC-962MIRDVR, so the default audio setting is via the car stereo when the unit's connected to your smartphone. Only applies to Android Auto mode.



## FM TRANSMITTER:

Select **FM Transmitter** button to enter into FM Transmitter Settings

### Transmitter settings.

The FM Transmitter can be used to transmit audio from the NC-962MIRDVR to your vehicle's built-in stereo speakers.



When you turn on the FM Transmitter, the NC-962MIRDVR will be muted. You'll need to match the frequency of the FM Transmitter to a free frequency channel on the vehicle head unit to hear the audio from the NC-962MIRDVR.

### FM TRANSMITTER SET-UP

1. Turn on the FM Transmitter. The NC-962MIRDVR built-in speaker is now muted.
2. Turn on the vehicle's radio and select a free frequency channel.
3. On your NC-962MIRDVR, select the frequency you've chosen on your radio.
4. Once the frequencies are matched, the NC-962MIRDVR will automatically playback audio through the vehicle's built-in speakers.

### AUX:

If your device is connected via an auxiliary cable to the AUX port of your vehicle, select AUX to play audio through the car's speakers.



## 14.5 BLUETOOTH FUNCTION OVERVIEW

FM TRANSMITTER STATUS	MUSIC/CALLS INITIATED/CALLS RECEIVED/CALLS INITIATED WITH SIRI/GOOGLE/NAVIGATION INSTRUCTIONS
FM Transmitter enabled	Played through vehicle's audio system via FM Transmitter

FM TRANSMITTER STATUS	MUSIC	CALLS INITIATED	CALLS RECEIVED
FM Transmitter disabled and Android phone is connected to vehicle's Bluetooth and NC-962MIRDVR	N/A	Played through vehicle's audio system	Played through vehicle's audio system
		Played through vehicle's audio system via NC-962MIRDVR	Played through vehicle's audio system via NC-962MIRDVR
FM Transmitter disabled and iPhone is connected to vehicle's Bluetooth and NC-962MIRDVR	Played through vehicle's audio system or via NC-962MIRDVR	Played through vehicle's audio system	Played through vehicle's audio system
		Played through vehicle's audio system via NC-962MIRDVR	Played through vehicle's audio system via NC-962MIRDVR

**NOTE:**

- For Android smartphones, please note that data calls such as Whatsapp cannot be initiated via the vehicle's audio system when connected to the NC-962MIRDVR.
- Android smartphone users will need to download the Android Auto app from the Google Play Store.
- Calls and navigation functions can be initiated by saying 'Hey Google' or 'OK Google' and 'Hey Siri'. The NC-962MIRDVR will use your smartphone data for all CarPlay and Android services.
- Not all apps on your smartphone are accessible via the NC-962MIRDVR. It will depend on iOS and Android terms and conditions.

## 15.0 WARRANTY TERMS AND CONDITIONS

Our goods come with guarantees that cannot be excluded under the Australian and New Zealand Consumer Law. You are entitled to a replacement or refund for a major failure and for compensation for any other reasonably foreseeable loss or damage. You are also entitled to have the goods repaired or replaced if the goods fail to be of acceptable quality and the failure does not amount to a major failure.

This warranty is provided in addition to your rights under the Australian and New Zealand Consumer Law.

Directed Electronics Australia Pty Ltd (Directed Electronics) warrants that this product is free from defects in material and workmanship for a period of 12 months from the date of purchase or for the period stated on the packaging. This warranty is only valid where you have used the product in accordance with any recommendations or instructions provided by Directed Electronics.

This warranty excludes defects resulting from alterations of the product, accident, misuse, abuse or neglect.

In order to claim the warranty, you must return the product to the retailer from which it was purchased or if that retailer is part of a National network, a store within that chain, along with satisfactory proof of purchase. The retailer will then return the goods to Directed Electronics. Directed Electronics will repair, replace or refurbish the product at its discretion. The retailer will contact you when the product is ready for collection. All costs involved in claiming this warranty, including the cost of the retailer sending the product to Directed Electronics, will be borne by you.



**Directed Electronics Address:** 115-119 Link Road Melbourne Airport, 3045 Victoria, Australia

**Ph:** +61 03 8331 4800

**Email:** support.nanocamplus.com.au

To view the complete NanoConnect range or for details on how to contact us, please visit our websites:

[www.nanocamplus.com.au](http://www.nanocamplus.com.au) | [www.nanocamplus.co.nz](http://www.nanocamplus.co.nz)



**Scan QR code for assistance.**

## **INDEMNITY**

You agree to defend, indemnify and hold harmless NanoConnect and its subsidiaries and affiliates from and against any and all claims, proceedings, injuries, liabilities, losses, costs and expenses (including reasonable legal fees), including but not limited to, claims alleging negligence, invasion of privacy, copyright infringement and/or trademark infringement against NanoConnect and its subsidiaries and affiliates or the NanoConnect services, relating to or arising out of your breach of any provision of these terms, your misuse of the NanoConnect or NanoConnect services, or your unauthorised modification or alteration of products or software.

## **WARRANTY AND WARRANTY DISCLAIMER**

NanoConnect has a limited warranty whereby NanoConnect warrants to you and only to you that the NanoConnect products will be free from defects in materials and workmanship for one (1) year from the date of your purchase of the NanoConnect product (unless a longer warranty period is required by law). The specifics of this NanoConnect limited warranty are at <https://www.NanoConnect.com.au/warranty>

To the extent possible under governing law, other than the above product warranty for the NanoConnect product, you understand and agree that the NanoConnect services are provided on an “as is” and “as available” basis. NanoConnect makes no warranty that the NanoConnect services will meet your requirements or that use of the NanoConnect services will be uninterrupted, timely, secure or error-free nor does NanoConnect make any warranty as to the accuracy or reliability of any information obtained through the NanoConnect services (including third party content), that any defects in the NanoConnect services will be corrected or that the NanoConnect products or NanoConnect services will be compatible with any other specific hardware or service. Further, NanoConnect does not warrant that the NanoConnect services or the NanoConnect servers that provide you with data and content are free of viruses or other harmful components. NanoConnect also assumes no responsibility for and shall not be liable for any damages caused by viruses that may infect your NanoConnect product.

You agree that NanoConnect is not an insurer and that NanoConnect is not providing you with insurance of any type. Any amounts that you pay NanoConnect for the NanoConnect service are not insurance premiums and are not related to the value of your vehicle or property, anyone else's property located in your vehicle or premises, or any risk of loss in your vehicle or at your premises. If you want insurance to protect against any risk of loss at your vehicle or premises, you will purchase it. In the event of any loss, damage or injury, you will not look to NanoConnect to compensate you or anyone else. You release and waive for yourself and your insurer all subrogation and other rights to recover against NanoConnect arising as a result of the payment of any claim for loss, damage or injury.

NanoConnect's equipment and services do not cause and cannot eliminate occurrences of certain events, including, but not limited to, vehicle accidents, property damage, lost property, theft of vehicle, theft of property. NanoConnect makes no guarantee or warranty, including any implied warranty of merchantability or fitness for a particular purpose, that the NanoConnect equipment and services provided will detect or avert such incidents or their consequences. NanoConnect does not undertake any risk that you or your vehicle or property, or the person or property of others, may be subject to injury or loss if such an event occurs. The allocation of such risk remains with you, not NanoConnect.

Other than the above product warranty for NanoConnect products, NanoConnect and its suppliers disclaim all warranties of any kind, whether express, implied, or statutory, regarding the NanoConnect equipment and any associated app/service. Including any implied warranty of title, merchantability, fitness for a particular purpose, or non infringement of third party rights. Because some jurisdictions do not permit the exclusion of implied warranties,

the last sentence of this section may not apply to you. NanoConnect hereby further expressly disclaims all liability for any claims for service failures that are due to normal product wear, product misuse, abuse, product modification, improper product selection or your non-compliance with any and all applicable federal, state or local laws. This warranty and warranty disclaimer give you specific legal rights, and you may have other rights that vary by state, province, or country. Other than as permitted by law, NanoConnect does not exclude, limit or suspend other rights you have, including those that may arise from the nonconformity of a sales contract. For a full understanding of your rights you should consult the laws of your state, province, or country. For our Australian customers: please note that this warranty is in addition to any statutory rights in Australia in relation to your goods which, pursuant to the Australian Consumer Law, cannot be excluded.

### **LIMITATIONS OF NANOCONNECT LIABILITY**

Under no circumstances will NanoConnect be liable in any way for any content, including, but not limited to, the loss of content, any errors or omissions in any content, or any loss or damage of any kind incurred in connection with use of or exposure to any content posted, emailed, accessed, transmitted, or otherwise made available via the NanoConnect app.

NanoConnect liability for damages, especially for breach of duty or obligation, delay in performance, non-performance, or malperformance shall be precluded, except when these are due to negligent breaches of any significant contractual duty or obligation on the part of NanoConnect. Any liability for negligence is limited to direct losses usually and typically foreseeable in such case. Should the claim for damages be based on willful or grossly

negligent breach of contractual duty or obligation on the part of NanoConnect, the preclusion and limitation of liability mentioned in the preceding sentences will not apply. The preceding preclusion and limitation of liability will also not apply to claims for damages arising out of loss of life, bodily injury or health impacts for which NanoConnect may be liable, or for non-contractual liability.

Some states and countries do not allow the exclusion or limitation of incidental or consequential damages, so the above limitation or exclusion may not apply to you. Additionally, this provision is not intended to limit NanoConnect's liability in the event of NanoConnect's willful or intentional misconduct.

## 16.0 NOTES

---

---

---

---

---

---

---

---

---

---

---

---

---

---

---

---

---

---

---

---

# Connecting your drive.

[www.nanocamplus.com.au](http://www.nanocamplus.com.au) | [www.nanocamplus.co.nz](http://www.nanocamplus.co.nz)



**R-NZ**

All Images, Information and Content are Copyright © 2024  
Directed Electronics Australia Pty Ltd. All Rights Reserved.

**NANOCAM+**

ANOTHER  
DIRECTED  
BRAND

**DIRECTED**  
AUSTRALIA & NZ

[www.directed.com.au](http://www.directed.com.au)  
[www.directed.co.nz](http://www.directed.co.nz)