

# NANOCAM+<sup>®</sup>

NCP-DVRFHD2

Full HD Front & Rear Dash Camera  
with 3.0 Screen + WIFI + Reversing Camera



1080P  
FULLHD

**USER MANUAL**

**Your Safety.** Our Priority



# CONTENTS

<b>1.0</b>	<b>CAUTION</b> .....	<b>7</b>
1.1	BATTERY WARNING.....	7
<b>2.0</b>	<b>INTRODUCTION</b> .....	<b>9</b>
<b>3.0</b>	<b>FEATURES</b> .....	<b>10</b>
<b>4.0</b>	<b>PACKAGE CONTENTS</b> .....	<b>10</b>
<b>5.0</b>	<b>PRODUCT OVERVIEW</b> .....	<b>11</b>
<b>6.0</b>	<b>GETTING STARTED</b> .....	<b>12</b>
6.1	TO REMOVE THE MEMORY CARD .....	12
<b>7.0</b>	<b>INSTALLING THE CAR DVR</b> .....	<b>12</b>
7.1	INSTALLING YOUR NCP-DVRFHD2 .....	13
7.2	ADJUST THE CAMERA POSITION.....	13
7.3	INSTALLING THE REAR CAMERA .....	14
7.3.1	REAR CAMERA WIRING DIAGRAM .....	15
7.3.2	REAR CAMERA FEATURES .....	15
7.4	CONNECTING TO POWER.....	16
<b>8.0</b>	<b>POWERING THE CAR DVR ON / OFF</b> .....	<b>16</b>

8.1	AUTO POWER ON/OFF .....	16
8.2	MANUAL POWER ON/OFF AND RESET .....	17
8.3	MANUAL POWER ON .....	17
8.4	POWER OFF .....	17
<b>9.0</b>	<b>RESET THE DEVICE .....</b>	<b>17</b>
<b>10.0</b>	<b>PLAYING BACK VIDEO ON A PC .....</b>	<b>17</b>
<b>11.0</b>	<b>INITIAL SETTINGS .....</b>	<b>18</b>
11.1	FORMATTING THE INSERTED MICRO SD CARD .....	18
11.2	SET DATE / TIME .....	19
<b>12.0</b>	<b>RECORDING VIDEO .....</b>	<b>20</b>
<b>13.0</b>	<b>LOCKED RECORDING .....</b>	<b>21</b>
<b>14.0</b>	<b>SCREEN INTERFACE .....</b>	<b>22</b>
<b>15.0</b>	<b>MOVIE MODE .....</b>	<b>22</b>
15.1	VIDEO RESOLUTION .....	23
15.2	LOOP RECORDING .....	23
15.3	MICROPHONE .....	24
<b>16.0</b>	<b>LDWS .....</b>	<b>25</b>
<b>17.0</b>	<b>PHOTO MODE .....</b>	<b>25</b>

17.1	RESOLUTION.....	26
17.2	PHOTO QUALITY.....	26
17.3	EXPOSURE .....	27
17.4	ISO SENSITIVITY .....	28
17.5	CONTRAST .....	29
17.6	SHARPNESS.....	29
17.7	SATURATION .....	30
17.8	LEVELS.....	31
<b>18.0</b>	<b>PLAYBACK MENU.....</b>	<b>32</b>
18.1	VOLUME .....	32
18.2	DELETING PHOTOS AND VIDEOS .....	32
18.3	LOCKING AND UNLOCKING PHOTOS AND VIDEOS.....	33
18.4	VIDEO TYPE.....	34
<b>19.0</b>	<b>SETTINGS MENU .....</b>	<b>35</b>
19.1	KEYPAD TONE .....	35
19.2	TIME SETTING.....	35
19.3	DATE/TIME .....	36
19.4	DATE FORMAT.....	36
19.5	STAMP .....	37

19.6	LANGUAGE.....	37
19.7	FLICKER.....	38
19.8	SCREEN SAVER .....	38
19.9	G SENSOR .....	39
<b>20.0</b>	<b>PARK MODE.....</b>	<b>40</b>
20.1	MOTION DETECTION .....	40
20.2	RESET.....	41
20.3	FORMAT SD CARD .....	42
20.4	FW VERSION .....	42
<b>21.0</b>	<b>WIFI.....</b>	<b>42</b>
21.1	VIDEO PLAY BACK .....	44
21.2	VIDEO DOWNLOAD .....	45
21.3	SHARING A FILE ON SOCIAL MEDIA .....	46
<b>22.0</b>	<b>WARRANTY TERMS &amp; CONDITIONS .....</b>	<b>47</b>

## **1.0 CAUTION**

- Ensure you are using your Car DVR within your countries' road laws. Please make sure you are familiar with your local road legislation before use.
- Avoid leaving your Car DVR in direct sunlight for extended periods of time in an unventilated space.
- Please set time and date before you use this device to record.
- The notifications given by the Car DVR are suggestions only, please drive to the actual conditions.
- The system is to be used only for non-commercial use, within the limits permitted by the relevant laws.
- Avoid using the Car DVR in the vicinity of any devices that emit radio interference (eg. Microwave Ovens).
- It is considered normal operation for the Car DVR to get warm during use.

## **1.1 BATTERY WARNING**

- Always power and charge the Car DVR using the provided 12/24V adapter. Improper charging of the Car DVR may result in failure of the internal battery.
- Never dismantle the Car DVR or expose the internal battery.
- Do not dispose of the Car DVR in fire.
- Dispose of the Car DVR observing local regulations being mindful of the internal battery.
- Do not attempt to replace or expose the internal battery.

## NOTES ON INSTALLATION

1. It is advised that the Car Dash Cam is installed near the rear view mirror, at the top centre of the windshield for optimal operation.
2. Make sure that the lens is within the range of the windscreen wiper to ensure a clear view when it rains.
3. Do not touch the lens with your fingers. Finger prints left on the lens will result in unclear videos or photos. If photos or videos are blurred, please clean the lens gently with a microfibre cloth.
4. Do not install the device on a tinted window. Doing so may damage the tint film and restrict the Car Dash Camera's recording capabilities.
5. It is recommended to install the rear camera near your license plate to provide an unhindered view from the rear of your vehicle.
6. Only use the included cable to power the Car Dash Cam.
7. The NCP-DVRFHD2 is designed to be constantly connected to the included power supply, and is NOT designed to be used solely with the camera's built in battery.
8. Please clean the windscreen thoroughly removing all dust and dirt particles before fixing the adhesive mount.
9. Since the dash cam mount sticks directly onto your windscreen using a 3M adhesive, it is important the camera is best positioned to capture the maximum viewing area when installed.
10. We suggest you power-on the dash camera and test the playback image on screen first prior to removing the 3M tape for installation.



11. Only remove the 3M tape when you are satisfied with the dash camera placement and image position are delivering the best possible image and view of the road ahead.
12. Ensure you are using your NCP-DVRFHD2 within your countries' road laws. Please make sure you are familiar with your local road legislation before use.

## 2.0 INTRODUCTION

Thank you for purchasing a NanoCam Plus Car DVR. We are certain that our product will give you trouble free operation while providing you with a safety feature that enhances your driving experience. Our products, like most after-market safety enhanced devices, are designed to assist and aid the driver, not to replace the manual function of the person operating the vehicle. Please read through these instructions before attempting to install this product.

For the latest manual and product updates, please visit our website at [www.nanocamplus.com.au](http://www.nanocamplus.com.au) or [www.nanocamplus.co.nz](http://www.nanocamplus.co.nz)

### 3.0 FEATURES

- Recording Full High Definition 1080p footage at 30 frames per second
- 3" colour IPS screen
- 135° wide angle lens
- Emergency recording saves your footage when an impact is detected
- Supports Micro SD cards, class 10 and above up to 128GB

### 4.0 PACKAGE CONTENTS



Dash Camera



Rear Camera



12/24V Adapter



3M Mount

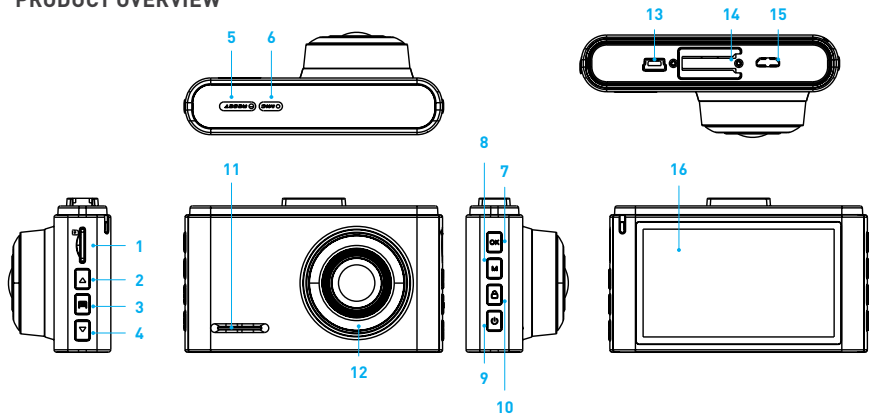


User Guide



8M Rear Camera Cable

## 5.0 PRODUCT OVERVIEW



1. Micro SD card slot\*
2. Up Button (▲)
3. Menu Button (☰)
4. Down Button (▼)
5. Reset
6. Microphone

7. Rec/OK Button
8. Mode Button
9. Lock Recording Button (🔒)
10. ON/OFF Power Button (🔌)
11. Speaker
12. Lens

13. Mini USB power socket
14. Slot for fixing 3M Mount
15. Rear Cam connector slot
16. Display Screen

\*Note: Micro SD is not included and must be purchased separately.

## **6.0 GETTING STARTED**

Inserting Memory Card with the Car DVR turned off and the screen facing towards you insert the memory card into the slot on the left side of the camera with the text on the Micro SD card facing away from you. Push the memory card in until a click is heard.

### **NOTE:**

1. Do not remove or insert the memory card while the Car DVR is turned on as this may damage the memory card or corrupt the memory cards stored data.
2. Please use a Class 10 or higher rated micro SD card with a maximum capacity of 128GB.
3. Please format the Micro SD card before the initial use.
4. When removing the memory card, be careful as the card may eject quickly.

## **6.1 TO REMOVE THE MEMORY CARD**

Ensure that the Car DVR is powered off, then push the memory card until a click is heard and then release the card to eject.

## **7.0 INSTALLING THE CAR DVR**

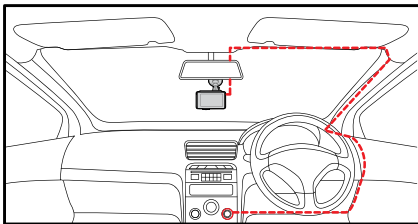
1. Remove the protective stickers from the Car DVR and the 3M mount.
2. Press the mount base firmly against the windscreen and hold for 30 seconds.
3. Insert the power cable adapter onto the dash camera power socket.

## 7.1 INSTALLING YOUR NCP-DVRFHD2

1. Remove the protective stickers from the Car DVR and the 3M mount.
2. Press the mount base firmly against the windscreen and hold for 30 seconds.
3. Insert the power cable adapter onto the dash camera power socket.

### NOTE:

1. It is recommended that the Car DVR is installed behind your vehicle's rear view mirror.
2. Make sure that the camera view is not obstructed by any window tint or any other objects.



## 7.2 ADJUST THE CAMERA POSITION

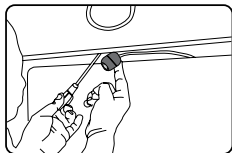
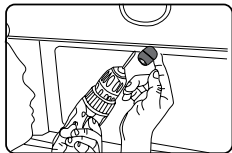
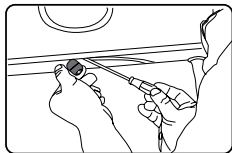
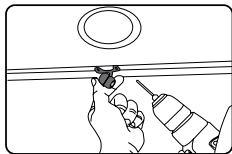
1. Loosen the knob and adjust the device vertically and/or horizontally.
2. Tighten the knob to make sure the device is securely locked in place.

### 7.3 INSTALLING THE REAR CAMERA

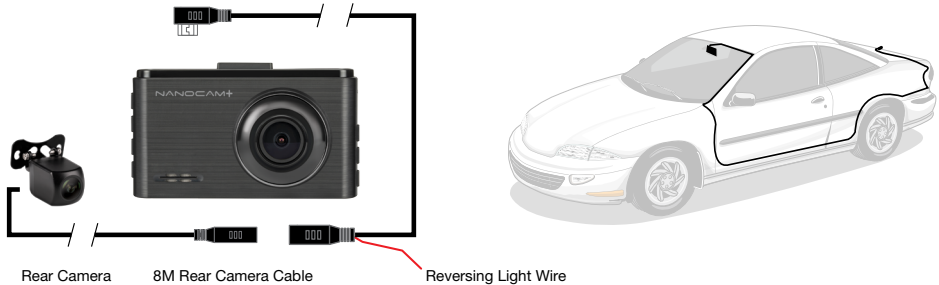
Select a flat and centred location near the number plate lamp at the rear of the vehicle to mount camera.

Attach tape to the bracket of the camera to hold the camera in position while installing, and drill two small holes, one for the first screw, the second to run the reverse camera cable through.

1. Select a flat and centred location near the number plate lamp at the rear of the vehicle to mount camera.
2. Attach tape to the bracket of the camera to hold the camera in position while installing, and drill two small holes, one for the first screw, the second to run the reverse camera cable through.
3. Use a screw driver to fix the first screw, leaving the screw loose enough to adjust the camera.
4. Insert the camera wire through the intended drilled hole checking the installation position.
5. Mark the position suitable for the second screw and drill a small hole for it.
6. Fix the second screw and securely tighten both screws.



### 7.3.1 REAR CAMERA WIRING DIAGRAM



### 7.3.2 REAR CAMERA FEATURES

After successfully installing and connecting of the rear camera into the main DVR, the rear camera will be displayed on the Dash Cam's 3.0" Screen.

Both Cameras will instantaneously start recording after DVR is powered ON.

Both Front and Rear Camera images will now be displayed on your Dash Camera's 3.0" Screen, you can switch between them by using the UP key.

Display can switch between:

1. Full Front Camera view
2. Full Rear Camera view
3. Half Front and Half Rear view
4. Full Front with small window for Rear view
5. Full Rear with small window for Front view

When your vehicle is in reverse gear, the display will change to the Rear Camera view to assist the driver when reversing / parking.

#### **7.4 CONNECTING TO POWER**

Only use the included 12/24V Power Adapter to power the Car DVR.

1. Once the Car DVR is securely installed on your vehicle's windscreen, plug the 12/24V Power Adapter into your vehicle's cigarette lighter.
2. Run the cable along your vehicle's console and windscreen and plug the USB Micro plug into the Car DVR.

#### **8.0 POWERING THE CAR DVR ON / OFF**


##### **8.1 AUTO POWER ON/OFF**

When the Car DVR is correctly installed and connected to your vehicle's 12/24V power supply, the Car DVR will automatically power up and start recording when the vehicle accessories are activated.




## **8.2 MANUAL POWER ON/OFF AND RESET**

### **8.3 MANUAL POWER ON**

Hold the  Power button on the top of the camera until the NanoCam Plus start up screen appears.

### **8.4 POWER OFF**

Make sure that recording has been stopped and then press the  Power button on the bottom right hand side of the car DVR. After powering down the device please wait for 10 seconds before turning the Car DVR back on.

## **9.0 RESET THE DEVICE**

If the Car DVR does not function normally, try restarting the car DVR. To restart the car DVR, with a flattened paper clip press the small button on the underside of the Car DVR.

## **10.0 PLAYING BACK VIDEO ON A PC**

To playback video files on your PC it is recommended to connect the Micro SD card (not included) directly to your PC using either a USB Micro SD card reader (not included) or if your PC has a SD card slot or a Micro SD/SD Card converter (not included). Once the Micro SD card is connected it should appear as a removable storage device. It is recommended that you transfer video files that you want to playback to a file on your computer before attempting to playback. This will reduce any delay in playback.

## 11.0 INITIAL SETTINGS

Before using the Car DVR we recommend formatting the inserted Micro SD Card and setting the correct Time and Date.

### 11.1 FORMATTING THE INSERTED MICRO SD CARD

Formatting the Micro SD card will delete all information on the inserted Micro SD Card and prepare the card for use with the Car DVR.

1. Press the **OK** Rec/Ok Button to stop the Car DVR from recording.
2. Press the **≡** Menu Button to enter the Video Menu.
3. Press the **≡** Menu Button to enter the Photo Menu.
4. Press the **≡** Menu Button again to enter the Playback Menu.
5. Press the **≡** Menu Button again to enter the General Settings Menu.
6. Use the **▲** Up and **▼** Down Buttons to navigate the Settings Menu and highlight the Format SD Card and press **OK** Rec/Ok to select.
7. Select **YES** to confirm and press the **OK** Rec/Ok Button.

#### **NOTE:**

1. Menus cannot be accessed while the camera is recording. Please stop the recording before attempting to access the menu.
2. Formatting your Micro SD Card will delete all files from the card. Once these files have been deleted you will not be able to recover them.

\* Please ensure that the NCP-DVRFHD2 is compatible with Micro SD cards up to 128GB capacity, Class 10 or above. Micro SD Card is not included.

## 11.2 SET DATE / TIME

Setting the Time and Date allows you to stamp your footage with the time as a reference.

1. Press the **OK** Rec/Ok Button to stop the Car DVR from recording.
2. Press the **≡** Menu Button to enter the Video Menu.
3. Press the **≡** Menu Button to enter the Photo Menu.
4. Press the **≡** Menu Button again to enter the Playback Menu.
5. Press the **≡** Menu Button again to enter the General Settings Menu.
6. Use the **▲** Up and **▼** Down Buttons to navigate the Settings Menu and highlight the **□** “Time setting” setting and press **OK** Rec/Ok to select.
7. Use the **▲** Up and **▼** Down buttons to edit the selected digit and the **OK** Rec/Ok button to confirm and progress to the next digit. The final field sets the format that the date will be presented in.
8. To save and exit the time and date, press the **OK** Rec/Ok button.

**NOTE:**

1. Menus cannot be accessed while the camera is recording. Please stop the recording before attempting to access the menu.
2. Once the time and date is set it can be stamped onto your footage using the Date Stamp setting. Please see section Date Stamp for more details.

**12.0 RECORDING VIDEO**


When the Car DVR is connected to your vehicle's 12/24V power supply, using the supplied 12/24V adapter the Car DVR will automatically power up and begin recording when you start your vehicle. During the start up the buttons will be unresponsive and the camera will take a moment to begin recording. The Car DVR will automatically stop recording and shutdown when your vehicle is powered off.

**NOTE:**

1. Because of how some vehicles are wired, the recording may continue when the engine is switched off. If this happens, please manually turn off the Car DVR or remove the car adapter from the cigarette lighter when not in use.
2. The recording loop length can be configured to save a video file for every 1,2,3,5 or 10 minutes of recording. For information on how to adjust this setting please refer to the Loop Recording section of this manual.
3. The device saves the recorded footage and photos on to the inserted Micro SD Card. If the memory card capacity is full, the oldest file in the memory card will be overwritten.

### 13.0 LOCKED RECORDING

Locked Recording saves the current video file and protects it from being overwritten. To manually start a Locked Recording follow the instructions below.

1. During recording push the  button.

#### **NOTE:**

1. If the G Sensor function is enabled and a collision is detected, the device will automatically trigger the emergency recording and protect the current video file. Please refer to the section titled G Sensor (Gravity Sensing).
2. The emergency recording file is created as a new file, which will be protected to avoid being overwritten by normal loop recording. If the inserted Micro SD Card fills up with Emergency Recording files the message “SD Card Full” will appear on the screen, the oldest emergency file will be automatically deleted when a new emergency recording file is created.

## 14.0 SCREEN INTERFACE



1. Video Mode
2. Loop Recording
3. Exposure
4. Microphone / Mute Recording
5. Recording Indicator
6. GPS
7. WIFI
8. Recording Time
9. Resolution
10. Park Mode
11. G Sensor
12. SD Card
13. Charging
14. Date
15. Time

## 15.0 MOVIE MODE

When the Car DVR is powered up the video screen will start by default. In this screen recording will automatically start and can be stopped by pressing the **OK** (Rec/Ok) Button. To access the Video Menu, ensure that the Car DVR is not recording then press the **≡** button.

## 15.1 VIDEO RESOLUTION

Resolution sets the video quality. Higher resolution video will capture more detail and will also produce larger files. To change the recording resolution, please follow the instructions below.

1. Press the **OK** (Rec/Ok) Button to stop the Car DVR from recording.
2. Press the **≡** Menu Button to enter the Movie Mode Menu.
3. Use the **▲** Up and **▼** Down Buttons to navigate the Settings Menu and highlight the Resolution setting and press **OK** (Rec/Ok) to select.
4. Use the **▲** Up and **▼** Down Buttons to highlight your required resolution, then press the **OK** (Rec/Ok) button to confirm your selection.

### **NOTE:**

1. Menus cannot be accessed while the camera is recording. Please stop the recording before attempting to access the menu.
2. Higher resolution clips will create larger files which will fill the Micro SD Card faster.

## 15.2 LOOP RECORDING

Loop recording allows you to set the duration that the camera will record before creating a new clip. To set the clip length please follow the instructions below.

1. Press the **OK** (Rec/Ok) Button to stop the Car DVR from recording.
2. Press the **≡** Button to enter the Movie Mode Menu.
3. Use the **▲** Up and **▼** Down Buttons to navigate the Settings Menu and highlight the Loop

Recording setting and press **OK** (Rec/Ok) to select.

4. Use the ▲ Up and ▼ Down Buttons to highlight your required Clip Length, then press the **OK** (Rec/Ok) button to confirm your selection.

**NOTE:**

1. Menus cannot be accessed while the camera is recording. Please stop the recording before attempting to access the menu.
2. Selecting the OFF option will create the longest possible clip, in most cases depending on the set resolution and other factors this will be limited to 10MB.
3. To avoid filling the card quickly it is advised to use the 1 or 2 minute options.

### 15.3 MICROPHONE

The Recording Audio setting allows you to mute the microphone during recording, or set it to record. To set your recording preferences, please follow the instructions below.

1. Press the **OK** (Rec/Ok) Button to stop the Car DVR from recording.
2. Press the **≡** Button to enter the Movie Mode Menu.
3. Use the and Buttons to navigate the Movie mode Menu and highlight the Recording Audio setting and press **OK** (Rec/Ok) to select.
4. Use the ▲ Up and ▼ Down Buttons to highlight either OFF or ON, then press the **OK** (Rec/Ok) button to confirm your selection.



**NOTE:**

- Menus cannot be accessed while the camera is recording. Please stop the recording before attempting to access the menu

**16.0 LDWS**

The built-in LDWS - Lane Departure Warning System will constantly monitor the road ahead and your driving lane. The camera will provide both an audible and visual alert if your vehicle is drifting out of it's lane.

1. Press the **OK** (Rec/Ok) Button to stop the Car DVR from recording.
2. Press the **≡** Button to enter the Movie Mode Menu.
3. Use the **←** and **→** Buttons to navigate the Movie mode Menu and highlight the LDWS setting and press **OK** (Rec/Ok) to select.
4. Use the **▲** Up and **▼** Down Buttons to highlight either OFF or ON, then press the **OK** (Rec/Ok) button to confirm your selection.

**17.0 PHOTO MODE**

Photo mode is used to capture still images using your Car DVR. To access the Photo mode ensure that the camera is not recording and press the **≡** Button twice. Photo mode also has a menu which is used to edit the photo settings.

## 17.1 RESOLUTION

Resolution sets the still image photo quality. Higher resolution images will capture more detail and will also produce larger files. To change the photo resolution, please follow the instructions below.

1. Press the **OK** (Rec/Ok) Button to stop the Car DVR from recording.
2. Press the **≡** Button twice to enter the Photo Menu.
3. Use the **▲** Up and **▼** Down Buttons to navigate the Photo Menu and highlight Resolution setting and press **OK** (Rec/Ok) to select.
4. Use the **▲** Up and **▼** Down Buttons to highlight your required resolution, then press the **OK** (Rec/Ok) button to confirm your selection.

### NOTE:

1. Menus cannot be accessed while the camera is recording. Please stop the recording before attempting to access the menu.
2. This setting can only be accessed through the Photo Menu, please make sure that you are in the Photo screen when you access the menu.

## 17.2 PHOTO QUALITY

Quality sets the image detail. Higher quality images will capture more detail and will also produce larger files. To change the recording resolution, please follow the instructions below.

1. Press the **OK** (Rec/Ok) Button to stop the Car DVR from recording.

2. Press the **≡** Button twice to enter the Photo Menu.
3. Use the **▲** Up and **▼** Down Buttons to navigate the Photo Menu and highlight the Quality setting and press **OK** (Rec/Ok) to select.
4. Use the **▲** Up and **▼** Down Buttons to highlight your required quality, then press the **OK** (Rec/Ok) button to confirm your selection.

**NOTE:**

1. Menus cannot be accessed while the camera is recording. Please stop the recording before attempting to access the menu.
2. This setting can only be accessed through the Photo Menu, please make sure that you are in the Photo screen when you access the menu.

### 17.3 EXPOSURE

Exposure is used to manually control the light settings. To change the Exposure setting follow the instructions below

1. Press the **OK** (Rec/Ok) Button to stop the Car DVR from recording.
2. Press the **≡** Button twice to enter the Photo Menu.
3. Use the **▲** Up and **▼** Down Buttons to navigate the Photo Menu and highlight the Exposure setting and press **OK** (Rec/Ok) to select.
4. Use the **▲** Up and **▼** Down Buttons to highlight your required Exposure setting, then press the **OK** (Rec/Ok) button to confirm your selection.

**NOTE:**

1. Menus cannot be accessed while the camera is recording. Please stop the recording before attempting to access the menu.
2. This setting can only be accessed through the Photo Menu, please make sure that you are in the Photo screen when you access the menu.

**17.4 ISO SENSITIVITY**

ISO is used to manage how much light is let into the image sensor. Setting a higher ISO will let in more light and blurred movement and lower ISO will capture less movement and less light. To change the ISO setting follow the instructions below.

1. Press the **OK** (Rec/Ok) Button to stop the Car DVR from recording.
2. Press the **≡** Button twice to enter the Photo Menu.
3. Use the **▲** Up and **▼** Down Buttons to navigate the Photo Menu and highlight the ISO setting and press **OK** (Rec/Ok) to select.
4. Use the **▲** Up and **▼** Down Buttons to highlight your required ISO setting, then press the **OK** (Rec/Ok) button to confirm your selection.

**NOTE:**

1. Menus cannot be accessed while the camera is recording. Please stop the recording before attempting to access the menu.
2. This setting can only be accessed through the Photo Menu, please make sure that you are in the Photo screen when you access the menu.

## 17.5 CONTRAST

Contrast setting is used to set the contrast level of the color in the recorded videos

1. Press the **OK** (Rec/Ok) Button to stop the Car DVR from recording.
2. Press the **≡** Button twice to enter the Photo Menu.
3. Use the **▲** Up and **▼** Down Buttons to navigate the Photo Menu and highlight the Contrast setting and press **OK** (Rec/Ok) to select.
4. Use the **▲** Up and **▼** Down Buttons to highlight your required Contrast setting, then press the **OK** (Rec/Ok) button to confirm your selection.

### **NOTE:**

1. Menus cannot be accessed while the camera is recording. Please stop the recording before attempting to access the menu.
2. This setting can only be accessed through the Photo Menu, please make sure that you are in the Photo screen when you access the menu.

## 17.6 SHARPNESS

Sharpness sets the boldness of the image. Images with a stronger sharpness will create bolder images with stronger outlines. To change the photo Sharpness, please follow the instructions below.

1. Press the **OK** (Rec/Ok) Button to stop the Car DVR from recording.
2. Press the **≡** Button twice to enter the Photo Menu.

3. Use the ▲ Up and ▼ Down Buttons to navigate the Photo Menu and highlight the Sharpness setting and press **OK** (Rec/Ok) to select.
4. Use the ▲ Up and ▼ Down Buttons to highlight your required sharpness, then press the **OK** (Rec/Ok) button to confirm your selection.

**NOTE:**

1. Menus cannot be accessed while the camera is recording. Please stop the recording before attempting to access the menu.
2. This setting can only be accessed through the Photo Menu, please make sure that you are in the Photo screen when you access the menu.

## 17.7 SATURATION

The Saturation setting is used to manually adjust the settings used to Saturate the intensity level of the colors reproduced on the video.

1. Press the **OK** (Rec/Ok) Button to stop the Car DVR from recording.
2. Press the **≡** Button twice to enter the Photo Menu.
3. Use the ▲ Up and ▼ Down Buttons to navigate the Photo Menu and highlight the Saturation setting and press **OK** (Rec/Ok) to select.
4. Use the ▲ Up and ▼ Down Buttons to highlight your required setting, then press the **OK** (Rec/Ok) button to confirm your selection.

**NOTE:**

1. Menus cannot be accessed while the camera is recording. Please stop the recording before attempting to access the menu.
2. This setting can only be accessed through the Photo Menu, please make sure that you are in the Photo screen when you access the menu.

**17.8 LEVELS**

The Level setting is used to manually adjust the settings used to counteract different light conditions. This setting is set to Auto by default. To change the Level setting follow the instructions below.

1. Press the **OK** (Rec/Ok) Button to stop the Car DVR from recording.
2. Press the **≡** Button twice to enter the Photo Menu.
3. Use the **▲** Up and **▼** Down Buttons to navigate the Photo Menu and highlight the White Balance setting and press **OK** (Rec/Ok) to select.
4. Use the **▲** Up and **▼** Down Buttons to highlight your required setting, then press the **OK** (Rec/Ok) button to confirm your selection.

**NOTE:**

1. Menus cannot be accessed while the camera is recording. Please stop the recording before attempting to access the menu.
2. This setting can only be accessed through the Photo Menu, please make sure that you are in the Photo screen when you access the menu.

## 18.0 PLAYBACK MENU

### 18.1 VOLUME

To increase the volume of the speaker of Dash Camera.

1. Navigate to the playback screen using the instructions in the section labeled Playback Screen.
2. In the Volume Mode use the ▲ Up and ▼ Down Buttons to select the level of volume you want to adjust.

### 18.2 DELETING PHOTOS AND VIDEOS

To delete an unlocked photo or video follow the instructions below.

1. Navigate to the playback screen using the instructions in the section labelled Playback.
2. In the Delete Section use the ▲ Up and ▼ Down Buttons to select the photo or video that you want to delete (if you want to delete all unlocked photos and videos select any unlocked Photo or Video).
3. Press the ☰ button to enter the Playback Menu and use the ▲ Up and ▼ Down Buttons to select the Delete setting and press the **OK** (Rec/Ok) button.
4. Navigate to the playback screen using the instructions in the section labelled Playback Screen.
5. In the Playback Screen use the ▲ Up and ▼ Down Buttons to select the photo or video that you want to delete (if you want to delete all unlocked photos and videos select any unlocked Photo or Video).



6. Select OK and press the **OK** (Rec/Ok) button to confirm the deletion.

**NOTE:**

1. Menus cannot be accessed while the camera is recording. Please stop the recording before attempting to access the menu.
2. You will only be able to delete videos that have not been protected by a G Sensor.
3. To unlock protected files please follow the directions in the section marked Protect Photos and Videos.
4. To easily delete all files on the inserted Micro SD Card, please follow the instructions given in the section marked Format

### **18.3 LOCKING AND UNLOCKING PHOTOS AND VIDEOS**

To Lock or Unlock photos or videos from being deleted, please follow the instructions below.

1. Navigate to the playback screen using the instructions in the section labeled Playback Screen.
2. In the Playback Screen use the ▲ Up and ▼ Down Buttons to select the photo or video that you want to lock or unlock (if you want to lock or unlock all photos and videos select any Photo or Video).
3. Press the ≡ button to enter the Playback Menu and use the ▲ Up and ▼ Down Buttons to select the Protect setting and press the **OK** (Rec/Ok) button.
4. Use the ▲ Up and ▼ Down Buttons to select either Unlock All, which will unlock all photos

and videos, Unlock Current to unlock the currently selected photo or video, Lock All to lock all videos and photos to protect them from deletion, or Lock Current to lock the currently selected to protect the currently selected photo or video from deletion.

5. Select OK and press the **OK** (Rec/Ok) button to confirm your selection.

**NOTE:**

1. Menus cannot be accessed while the camera is recording. Please stop the recording before attempting to access the menu.
2. To easily delete all file on the inserted Micro SD Card, please follow the instructions given in the section marked Format.

#### **18.4 VIDEO TYPE**

Video Type helps you to select the type of folder in which you want to store your Videos

1. Navigate to the playback screen using the instructions in the section labeled Playback Screen.
2. In the Playback Screen use the ▲ Up and ▼ Down Buttons to select the folder, Normal Parking or Emergency. All your videos will be stored in the selected folder.
3. Select OK and press the **OK** (Rec/Ok) button to confirm your selection.

**NOTE:**

- Menus cannot be accessed while the camera is recording. Please stop the recording before attempting to access the menu.

## 19.0 SETTINGS MENU

The Settings menu is used to adjust the cameras Settings.

To Access the Settings menu, ensure that the camera is not recording and press the **≡** Menu Button to enter the Video Menu, then press the **≡** Menu Button again to enter the Photo Menu, Press the **≡** Menu Button again to enter PlayBack Menu , Press the **≡** Menu Button again to enter General Settings.

## 19.1 KEYPAD TONE

Keypad tone will help you to mute the keypad pressing tone.

1. Press the **OK** (Rec/Ok) Button to stop the Car DVR from recording.
2. Press the **≡** Button 4 times to enter the General Setting Menu.
3. Use the **▲** Up and **▼** Down Buttons to navigate the Settings Menu and highlight the Keytone and press **OK** (Rec/ Ok) to select On or Off.

## 19.2 TIME SETTING

Time Setting will help you to set the time of your DVR matching to the local time

1. Press the **OK** (Rec/Ok) Button to stop the Car DVR from recording.
2. Press the **≡** Button 4 times to enter the General Setting Menu.
3. Use the **▲** Up and **▼** Down Buttons to navigate the Settings Menu and highlight the Auto Power Off and press **OK** (Rec/ Ok) to select Never /1min/5minutes

### 19.3 DATE/TIME

Date/Time option will help you to set the date in the format which you want on you video display and also on the water mark on the recorded video.

1. Press the **OK** (Rec/Ok) Button to stop the Car DVR from recording.
2. Press the **≡** Button 4 times to enter the General Setting Menu.
3. Use the **←** and **→** Buttons to navigate the Settings Menu and highlight the Date format setting and press **OK** (Rec/Ok) to select.
4. Use the **▲** Up and **▼** Down Buttons to highlight the format which you want to be selected, then press the **OK** (Rec/Ok) button to confirm your selection.

### 19.4 DATE FORMAT

Date Format option will help you to set the date in the format which you want on you video display and also on the water mark on the recorded video.

1. Press the **OK** (Rec/Ok) Button to stop the Car DVR from recording.
2. Press the **≡** Button 4 times to enter the General Setting Menu.
3. Use the **←** and **→** Buttons to navigate the Settings Menu and highlight the Date format setting and press **OK** (Rec/Ok) to select.
4. Use the **▲** Up and **▼** Down Buttons to highlight the format which you want to be selected, then press the **OK** (Rec/Ok) button to confirm your selection.

## 19.5 STAMP

GPS Stamp feature will stamp the GPS co-ordinates onto your recorded video as it records by default.

1. Press the **OK** (Rec/Ok) Button to stop the Car DVR from recording.
2. Press the **≡** Button 4 times to enter the General Setting Menu.
3. Use the **←** and **→** Buttons to navigate the Settings Menu and highlight the Stamp setting and press **OK** (Rec/Ok) to select.
4. Use the **▲** Up and **▼** Down Buttons to highlight the stamp option which you want to be selected, then press the **OK** (Rec/Ok) button to confirm your selection.

## 19.6 LANGUAGE

Language option will help you to select the language of your dashcam.

1. Press the **OK** (Rec/Ok) Button to stop the Car DVR from recording.
2. Press the **≡** Button 4 times to enter the General Setting Menu.
3. Use the **←** and **→** Buttons to navigate the Settings Menu and highlight the language setting and press **OK** (Rec/Ok) to select.
4. Use the **▲** Up and **▼** Down Buttons to highlight the language option which you want to be selected, then press the **OK** (Rec/Ok) button to confirm your selection.

## 19.7 FLICKER

Flicker option will help you to adjust the camera's frequency rate when recording video to minimise flickering effect from LED lights.

1. Press the **OK** (Rec/Ok) Button to stop the Car DVR from recording.
2. Press the **≡** Button 4 times to enter the General Setting Menu.
3. Use the **←** and **→** Buttons to navigate the Settings Menu and highlight the Flicker setting and press **OK** (Rec/Ok) to select.
4. Use the **▲** Up and **▼** Down Buttons to highlight the 50/60Hz frequency, then press the **OK** (Rec/Ok) button to confirm your selection.

## 19.8 SCREEN SAVER

Setting the Screen Saver will set the time after which the screen will switch off automatically while DVR will continue recording.

1. Press the **OK** (Rec/Ok) Button to stop the Car DVR from recording.
2. Press the **≡** Button 4 times to enter the General Setting Menu.
3. Use the **←** and **→** Buttons to navigate the Settings Menu and highlight the Screen Time out and press **OK** (Rec/Ok) to select.
4. Use the **▲** Up and **▼** Down Buttons to highlight the Off /1 min / 3 minutes, then press the **OK** (Rec/Ok) button to confirm your selection.

## 19.9 G SENSOR

The G Sensor defines the required force needed to trigger emergency recording. Once Emergency recording is triggered the current recording will be saved and protected from being saved over by the normal loop recording. To set the required sensitivity please follow the instructions below.

1. Use the ▲ Up and ▼ Down Buttons to navigate the Settings Menu and highlight the Protect Level setting and press **OK** (Rec/ Ok) to select.
2. Use the ▲ Up and ▼ Down Buttons to highlight either OFF/ HIGH/ MIDDLE/ LOW, then press the **OK** (Rec/Ok) button to confirm your selection.

### **NOTE:**

1. Menus cannot be accessed while the camera is recording. Please stop the recording before attempting to access the menu.
2. If your memory card is filling up quickly you may need to lower the sensitivity of the G Sensor (Gravity Sensor) to decrease the number of triggers caused by normal driving.

## 20.0 PARK MODE

When activated, Parking Monitor will monitor the DVR's G Sensor after you have turned off your vehicle. If an impact is detected the DVR will power up and record a 60 second clip. To set Park Mode, follow the instructions below.

1. Ensure that the Car DVR is not recording.
2. Press the **≡** Menu Button 4 times to enter the General Settings Menu.
3. Use the **▲** Up and **▼** Down Buttons to navigate the Settings Menu and highlight the Parking Monitor setting and press **OK** (Rec/Ok) to select.
4. Use the **▲** Up and **▼** Down Buttons to highlight either OFF /HIGH/MIDDLE/LOW, then press the **OK** (Rec/Ok) button to confirm your selection.

### **NOTE:**

1. Menus cannot be accessed while the camera is recording. Please stop the recording before attempting to access the menu.
2. Park mode requires the DVR's internal battery to be fully charged.
3. Park Mode is activated when an impact is detected and will record from that point onward.

## 20.1 MOTION DETECTION

Motion Detection monitors on screen movement and will start recording when movement is detected. Motion Detection will also stop recording after 10 seconds of no on screen movement.



To set up Motion Detection on your Dash Cam follow the directions below.

1. Press the **OK** (Rec/Ok) Button to stop the Car DVR from recording.
2. Press the **≡** Button 4 times to enter the General Setting Menu.
3. Use the **▲** Up and **▼** Down Buttons to navigate the Settings Menu and highlight the Protect Level setting and press **OK** (Rec/ Ok) to select.
4. Use the **▲** Up and **▼** Down Buttons to highlight either OFF/ LOW/ MIDDLE/ HIGH, then press the **OK** (Rec/Ok) button to confirm your selection.

**NOTE:**

1. Menus cannot be accessed while the camera is recording. Please stop the recording before attempting to access the menu.

## 20.2 RESET

Reset will make the camera go back to default factory settings

1. Press the **OK** (Rec/Ok) Button to stop the Car DVR from recording.
2. Press the **≡** Button 4 times to enter the General Setting Menu.
3. Use the **▲** Up and **▼** Down Buttons to navigate the Settings Menu and highlight the Reset setting and press **OK** (Rec/Ok) to select.
4. Select Yes or No to restore to default factory settings.

### 20.3 FORMAT SD CARD

Format SD Card will format your Micro SD Card.

1. Press the **OK** (Rec/Ok) Button to stop the Car DVR from recording.
2. Press the **≡** Button 4 times to enter the General Setting Menu.
3. Use the **▲** Up and **▼** Down Buttons to navigate the Settings Menu and highlight the Format SD card and press **OK** (Rec/Ok) to select.
4. Select Yes or No to restore to format Micro SD Card.

#### **NOTE:**

- All files on your Micro SD Card will be deleted if you format the Micro SD Card.

### 20.4 FW VERSION

FW Version will show the current firmware version of your Dash Cam.

1. Press the **OK** (Rec/Ok) Button to stop the Car DVR from recording.
2. Press the **≡** Button 4 times to enter the General Setting Menu.
3. Use the **▲** Up and **▼** Down Buttons to navigate the Settings Menu and highlight the Setup Reset setting and press **OK** (Rec/Ok) to select.

### 21.0 WIFI

To Switch On/Off inbuilt WIFI

1. Press the OK [Rec/Ok] Button to stop the Car DVR from recording.
2. Press the ≡ Button four times to enter the General Setting Menu.
3. Use the ▲ Up and ▼ Down Buttons to navigate the Settings Menu and highlight the WIFI and press OK [ Rec/Ok] to select.
4. Select ON/Off to Switch On/Off WIFI.



**WIFI is default ON.**

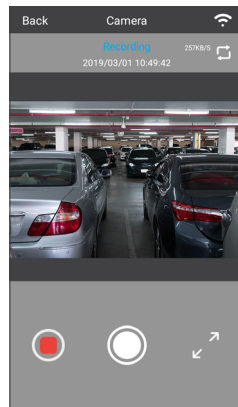
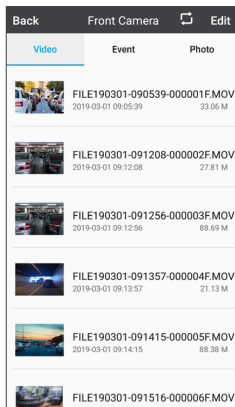
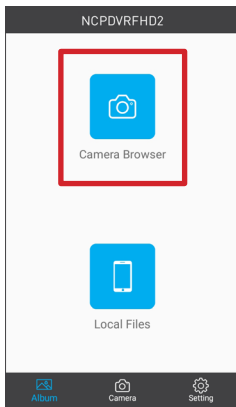
1. Please download the NCP-DVRFHD2 app from the play store or Apple Store depending on your mobile device.
2. After successfully downloading and installation of the app on your mobile.
3. Search for NCP-DVRFHD2 WIFI connection and connect it on your mobile device by entering password "12345678".
4. Please open the app and you can sync with your DVR which will show you the videos and app settings.
5. Please search for the network NCP-DVRFHD2 and connect with your mobile device.

**NOTE:**

1. To ensure that the DVR pairs with your smartphone properly, please turn on the DVR and keep the smartphone in close proximity to the DVR for successful pairing via Wi-Fi.
2. The DVR will need to be continuously powered on to maintain the connection with your smartphone.

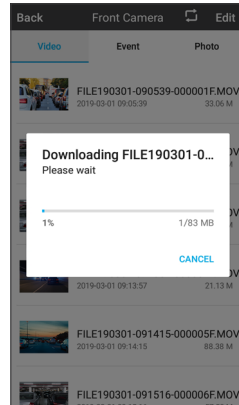
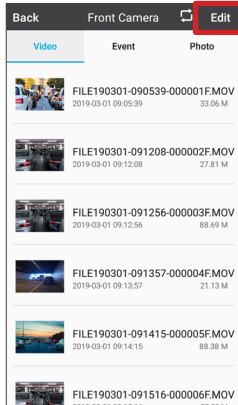
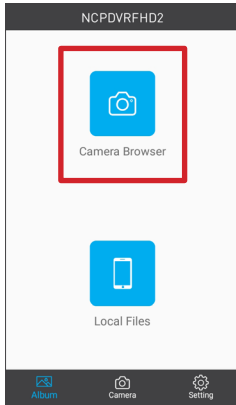
## 21.1 VIDEO PLAY BACK

1. Open the NCP-DVRFHD2 App.
2. Press the Camera Browser Icon.
3. Select a Video to playback.
4. Selected Video will start playing.



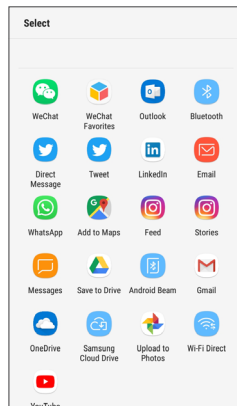
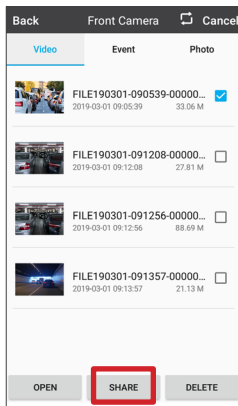
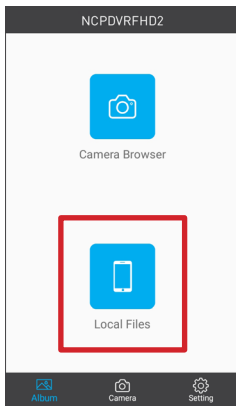
## 21.2 VIDEO DOWNLOAD

1. Open the NCP-DVRFHD2 App.
2. Press the Camera Browser Icon.
3. Press the edit Icon on the top right of App.
4. Select a Video to download.
5. Press the Save button and the video will to download.



## 21.3 SHARING A FILE ON SOCIAL MEDIA

1. Open the NCP-DVRFHD2 App.
2. Press the Local Files Icon.
3. Press the Share Icon on the bottom.  
Note: Files needs to be saved on phone before sharing
4. Select a App to share with.



## 22.0 WARRANTY TERMS & CONDITIONS

Our goods come with guarantees that cannot be excluded under the Australian Consumer Law. You are entitled to a replacement or refund for a major failure and for compensation for any other reasonably foreseeable loss or damage. You are also entitled to have the goods repaired or replaced if the goods fail to be of acceptable quality and the failure does not amount to a major failure.

This warranty is provided in addition to your rights under the Australian Consumer Law. Directed Electronics Australia Pty Ltd (Directed Electronics) warrants that this product is free from defects in material and workmanship for a period of 12 months from the date of purchase or for the period stated on the packaging. This warranty is only valid where you have used the product in accordance with any recommendations or instructions provided by Directed Electronics.

This warranty excludes defects resulting from alterations of the product, accident, misuse, abuse or neglect. In order to claim the warranty, you must return the product to the retailer from which it was purchased or if that retailer is part of a national network, a store within that chain, along with satisfactory proof of purchase. The retailer will then return the goods to Directed Electronics.

Directed Electronics will repair, replace or refurbish the product at its discretion. The retailer will contact you when the product is ready for collection. All costs involved in claiming this warranty, including the cost of the retailer sending the product to Directed Electronics, will be borne by you.

**Email:** [info@nanocamplus.com.au](mailto:info@nanocamplus.com.au) | **Ph:** +61 03 8331 4800

## **INDEMNITY**

You agree to defend, indemnify and hold harmless Nanocam Plus and its subsidiaries and affiliates from and against any and all claims, proceedings, injuries, liabilities, losses, costs and expenses (including reasonable legal fees), including but not limited to, claims alleging negligence, invasion of privacy, copyright infringement and/or trademark infringement against Nanocam Plus and its subsidiaries and affiliates, relating to or arising out of your breach of any provision of these terms, your misuse of Nanocam Plus products or its services, or your unauthorised modification or alteration of products or software.

## **WARRANTY AND WARRANTY DISCLAIMER**

Nanocam Plus has a limited warranty on whereby Nanocam Plus warrants to you and only to you that this Nanocam Plus product will be free from defects in materials and workmanship for one (1) year from the date of your purchase (unless a longer warranty period is required by law). The specifics of this Nanocam Plus limited warranty are covered in this manual. To the extent possible under governing law, other than the above product warranty for the Nanocam Plus product, you understand and agree that the Nanocam Plus products and services are provided on an "as is" and "as available" basis. Nanocam Plus makes no warranty that the Nanocam Plus products and services will meet your requirements or that use of the Nanocam Plus products and services will be uninterrupted, timely, secure or error-free nor does Nanocam Plus make any warranty as to the accuracy or reliability of any information obtained through Nanocam Plus (including third party content), that any defects in Nanocam Plus products and services will be corrected or that Nanocam Plus products or services will be compatible with any other specific hardware or service. Further, Nanocam Plus does not warrant that Nanocam Plus products or services or Nanocam Plus servers will provide you with data and



content are free of viruses or other harmful components. Nanocam Plus also assumes no responsibility for and shall not be liable for any damages caused by viruses that may infect your Nanocam Plus product or software. In the event of any loss, damage or injury, you will not look to Nanocam Plus to compensate you or anyone else. You release and waive for yourself and your insurer all subrogation and other rights to recover against Nanocam Plus arising as a result of the payment of any claim for loss, damage or injury. Nanocam Plus equipment and services do not cause and cannot eliminate occurrences of certain events and Nanocam Plus makes no guarantee or warranty, including any implied warranty of merchantability or fitness for a particular purpose or that Nanocam Plus equipment and services provided will detect or avert such incidents or their consequences. Nanocam Plus does not undertake any risk that you or property, or the person or property of others, may be subject to injury or loss if such an event occurs. The allocation of such risks remains with you, not Nanocam Plus. Other than the above product warranty for Nanocam Plus products, its suppliers disclaim all warranties of any kind, whether express, implied, or statutory, regarding Nanocam Plus products and services, including any implied warranty of title, merchantability, fitness for a particular purpose, or non-infringement of third party rights. Because some jurisdictions do not permit the exclusion of implied warranties, the last sentence of this section may not apply to you. Nanocam Plus hereby further expressly disclaims all liability for claims for service failures that are due to normal product wear, product misuse, abuse, product modification, improper product selection or you noncompliance with all applicable federal, state or local laws.

This warranty and warranty disclaimer give you specific legal rights, and you may have other rights that vary by state, province or country. Other than as permitted by law, Nanocam Plus does not exclude, limit or suspend other rights you have, including those that may arise from

the non-conformity of a sales contract. For a full understanding of your rights, you should consult the laws of your state, province, or country. For our Australian customers: please note that this warranty is in addition to any statutory rights in Australia in relation to your goods which, pursuant to the Australian Consumer Law, cannot be excluded.

### **LIMITATIONS OF NANOCAM PLUS LIABILITY**

Under no circumstances will Nanocam Plus be liable in any way for any content, including, but not limited to, the loss of content, any errors or omissions in any content, or any loss or damage of any kind incurred in connection with use of or exposure to any content posted, emailed, accessed, transmitted, or otherwise made available via Nanocam Plus. Nanocam Plus liability for damages, especially for breach of duty or obligation, delay in performance, non-performance, or malperformance shall be precluded, except when these are due to negligent breaches of any significant contractual duty or obligation on the part of Nanocam Plus. Any liability for negligence is limited to direct losses usually and typically foreseeable in such case. Should the claim for damages be based on wilful or grossly negligent breach of contractual duty or obligation on the part of Nanocam Plus, the preclusion and limitation of liability mentioned in the preceding sentences will not apply. The preceding preclusion and limitation of liability will also not apply to claims for damages arising out of loss of life, bodily injury or health impacts for which Pixbee may be liable, or for non-contractual liability.

Some states and countries do not allow the exclusion or limitation of incidental or consequential damages, so the above limitation or exclusion may not apply to you. Additionally, this provision is not intended to limit Nanocam Plus' liability in the event of Nanocam Plus' wilful or intentional misconduct.



**Your Safety.** Our Priority

NANOCAM+

[www.nanocamplus.com.au](http://www.nanocamplus.com.au)  
[www.nanocamplus.co.nz](http://www.nanocamplus.co.nz)



All Images, Information and Content are Copyright © 2023  
Directed Electronics Australia Pty Ltd. All Rights Reserved.

**DIRECTED**  
AUSTRALIA & NZ

[www.directed.com.au](http://www.directed.com.au)  
[www.directed.co.nz](http://www.directed.co.nz)